

## FEATURES & SPECIFICATIONS

**INTENDED USE** — Intended for low to medium mounting heights where dust, dirt, humidity or moisture are present. Ideal for canopies, dock areas, wastewater treatment, refrigerated areas, food processing and other non-hazardous environments. Certain airborne contaminants can diminish integrity of acrylic. [Click here for Acrylic Environmental Compatibility table for suitable uses.](#)

**CONSTRUCTION** — Housing formed from impact resistant, UV stabilized, fiberglass reinforced polyester with cold-rolled steel enclosed wireway. Poured in place gasketing provides a seal between housing and diffuser. Captive, corrosion-resistant cam-action latches secure the diffuser; six on 4' units, and ten on 8' units. Stainless steel latches available.

Finish: Painted parts pretreated with a five-stage iron-phosphate process to ensure superior paint adhesion and corrosion resistance, then finished with a high-gloss, baked white enamel.

**OPTICS** — High-impact acrylic diffuser with a stippled interior surface to spread lamp image.

**PLEASE NOTE:** The standard 4' diffuser is 2-1/4" deep, and the standard 8' or 48T8HO diffuser is 3" deep. To order the 4' diffuser so that it matches the depth of the 8' diffuser, order the ARDP option. The 8' diffuser is not available in the 2-1/4" depth.

**ELECTRICAL** — Thermally protected, resetting, Class P, HPF, non-PCB, UL Listed and CSA Certified ballast is standard.

AWM, TFN, THHN wire throughout, rated for required temperatures.

**INSTALLATION** — For unit or row installations, surface (ceiling or wall) or suspended mounting. Wall mounting; horizontal orientation only for use in damp locations. Stainless steel surface spring-mounting brackets standard (2 included).

**LISTINGS** — 120V, 277V and MVOLT are UL Listed and CSA Certified (standard). 347V is CSA Certified (see Options). NOM Certified (see Options). Listed for 25°C ambient and wet locations for covered-ceiling applications. IP65 rated. Optional IP67 rating available (supplied with 8 latches on 4' units and 14 latches for 8' units; covered ceiling not required). Compliance to FDA/USDA requirements and/or NSF splash-zone certification.

**WARRANTY** — 1-year limited warranty. Complete warranty terms located at [www.acuitybrands.com/CustomerResources/Terms\\_and\\_conditions.aspx](http://www.acuitybrands.com/CustomerResources/Terms_and_conditions.aspx)

**Note:** Actual performance may differ as a result of end-user environment and application. Specifications subject to change without notice.

Catalog Number
Notes
Type

Enclosed and Gasketed Industrial

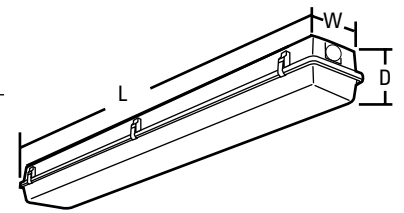


# DMW

**INSTANT, PROGRAMMED OR RAPID START**

4' or 8' length  
1, 2 or 3 lamps

Specifications	
Length:	50 (127.0) 98 (248.9)
Width:	8-1/8 (20.6)
Fixture depth:	5-5/8 (14.3) (deep lens) 4-3/4 (12.1) (standard lens)



All dimensions are shown in inches (centimeters) unless otherwise noted.

### ORDERING INFORMATION

Lead times will vary depending on options selected. Consult with your sales representative.

**Example:** DMW 2 32 MVOLT GEB10IS

DMW Series	Number of lamps	Lamp type	Diffuser	Voltage	Ballast	Options
DMW	1	28T5 28W T5 (48") <sup>3</sup>	(blank)	120	GEB10IS	ELDW Emergency battery pack (nominal 300 lumens) <sup>7,8</sup>
Wet location	2	32 32W T8 (48")	2-1/4" Deep high-impact acrylic (50% DR)	277		EL5DW Emergency battery pack (nominal 500 lumens) <sup>7,8</sup>
For tandem double-length unit, add prefix T. Example: TDMW <sup>1</sup>	3 <sup>2</sup>	48T8HO 44W T8HO (48")	3" Deep high-impact acrylic (50% DR) <sup>5</sup>	347		EL6DW Emergency battery pack (nominal 600 lumens) <sup>7,8</sup>
		54T5HO 54W T5HO (48") <sup>4</sup>	ARDP	MVOLT	GEB10RS	EL14DW Emergency battery pack (nominal 1400 lumens) <sup>7,8</sup>
		96T8 59W T8 slimline (96")		others available		GLR Internal fast-blow fusing (not available with MVOLT or 347V) <sup>9</sup>
		96T8HO 86W T8 380mA (96")			GEB10PS	GMF Internal slow-blow fusing (not available with MVOLT) <sup>9</sup>
						RIF1 Radio interference filter, one per fixture
					GEB10PS90	STSL Stainless steel latches
						WLF Wet location fittings (one pair; installed, top, for use with 1/2" rigid conduit)
						IP67 IP67 rated; requires 8 latches for 4' fixtures and 14 latches for 8' fixtures
						CSA CSA certified (only required for 347V)
						NOM NOM certified
						CS89 6' white cord, 16/3, no plug, wet location
						CS88 6' Brad Harrison 16/3 cord and straight blade plug set wet location <sup>9</sup>
						MSI_ Wet location occupancy sensor pre-wired <sup>9,10</sup>
						DL Damp location <sup>11</sup>

#### Accessories: Order as separate catalog number.

BCD	Bracket for hanger chain mounting. Two per package <sup>12</sup>
HC36	Chain hangers (1 pair, 36" long); Requires BCD
WLF	Wet location fittings (1 pair, not installed, for use with 1/2" rigid conduit)
DMW/VRISMB	Surface mounting brackets (pair) <sup>13</sup>

#### Notes

- Not available with 96T8 or 96T8HO.
- 32W T8 and 28 T5 lamps only.
- Must specify GEB10PS ballast.
- Must specify GEB10PS90 ballast.
- ARDP standard on 48T8HO and 8' fixtures.
- Available 347V T8 only.
- Must specify voltage; 120 or 277V only.
- Check battery pack spec sheet on [www.powersentrysafety.com](http://www.powersentrysafety.com) for compatibility.
- Must specify voltage.
- For mounting up to 8' specify MS18; for mounting up to 20' specify MS120.
- DL option required for battery packs, sensors, and cord sets that are not wet location listed.
- For stainless steel, specify STS (ex: BCD STS).
- Brackets ship standard with fixture. For replacement purposes only.

# DMW Instant, Programmed or Rapid Start

## MOUNTING DATA

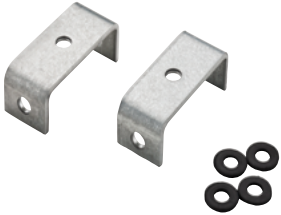
For unit or row installation, surface (ceiling or wall) or suspended mounting.

DMW — Drill holes through housing and channel at appropriate locations. Includes gasketed wet location fittings on ends for power feeding/mounting. Fitting is threaded for 1/2" rigid conduit (optional WLF for top mounting). Attach to surface using fasteners and sealing washers (by others) appropriate for ceiling materials.

Unit installation — Minimum of two hangers required.

Row installation — Minimum of two hangers required. Recommended 1/2" nipple with union (by others) for DMW.

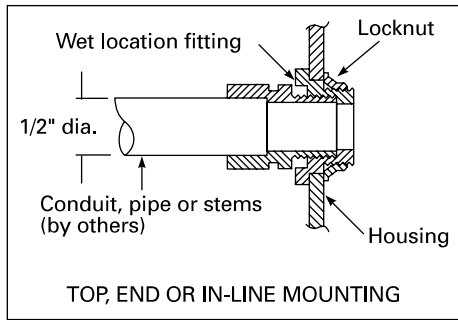
## MOUNTING ACCESSORIES



BCD

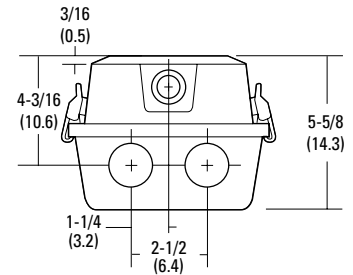
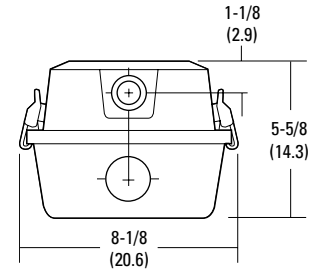


HC36



## DIMENSIONS

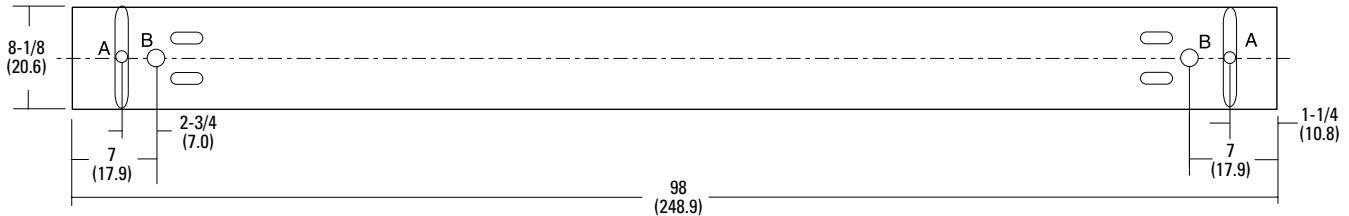
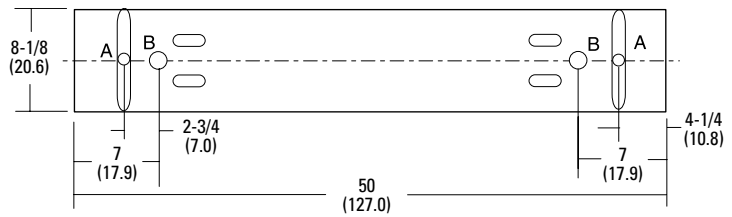
Inches (centimeters). Subject to change without notice.



A = 11/16 (17) Dia.

B = 1-1/8 (29) Dia.

Recommended mounting locations (field drilling required)



## PHOTOMETRICS

See [www.lithonia.com](http://www.lithonia.com).