

# SPEED-LOCK™ Steel Box Connectors and SPEED-LOCK™ Zinc Snap Connectors

Type AMC

**NEC/CEC:**  
Listed for Ordinary Locations

## Applications

- To ground and secure MC, AC and flexible metal conduit to boxes and enclosures.
- For steel box installations.

## Features



- No locknut required.
- Single-unit or duplex construction with captive clamp.
- Connects over 100 sizes of MC, AC or flexible metal conduit with just four fittings.
- Easy to install. Just tilt, insert and snap down.
- Single-unit construction eliminates loose component parts.
- Integral red plastic insulated throat busing provides maximum protection for wire insulation.

## Standard Material/Finish

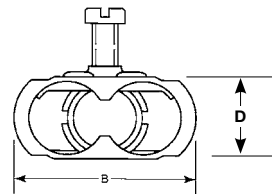
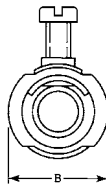
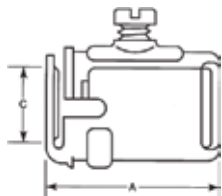
- Steel/zinc electroplated

## NEC/CEC Certifications and Compliances

- UL Standard: 514B
- UL Listed: E11852
- CSA Standard: C22.2 No. 18.3
- CSA Certified: 028507

	Trade Size (Inches)	Dimensions in Millimeters (Inches)				Weight per 100 kg (lb)	Catalog Number
		A	B	C	D		
	1/2 Single	35.1 (1.38)	25.4 (1.00)	10.4 (0.41)	17.5 (0.69)	2.95 (6.50)	<b>AMC-50</b>
<b>AMC-50</b>	3/4 Single	41.4 (1.63)	33.3 (1.31)	14.2 (0.56)	24.9 (0.98)	3.40 (7.50)	<b>AMC-75</b>
	1/2 Knockout; 3/4 capacity	41.4 (1.63)	33.3 (1.31)	14.2 (0.56)	24.9 (0.98)	3.40 (7.50)	<b>AMC-5075</b>
<b>AMC-52</b>	1/2 Duplex	39.6 (1.56)	43.7 (1.72)	14.2 (0.56)	17.5 (0.69)	5.44 (12.00)	<b>AMC-52</b>

## Illustrated Dimensions



# SPEED-LOCK™ Steel Box Connectors and SPEED-LOCK™ Zinc Snap Connectors

Type AMC

NEC/CEC:  
Listed for Ordinary Locations

Cable Type	AMC-50 1/2" Knockout	AMC-5075 1/2" Knockout 3/4" Capacity	AMC-75 3/4" Knockout	AMC-52 ② 1/2" Knockout Duplex
AC Steel	14/2 (0.433 Dia.), 14/3, 14/4, 12/2, 12/3, 12/4, 10/2, 10/3	10/4 (0.594 Dia.), 10/5, 8/3, 8/4, 6/3	10/4 (0.594 Dia.), 10/5, 8/3, 8/4, 6/3	14/2 (0.433 Dia.), 14/3, 14/4, 12/2, 12/3, 12/4
HFC Steel Health Care Facilities	14/2 (0.433 Dia.), 14/3, 12/2, 12/3, 10/2	—	—	14/2 (0.433 Dia.), 14/3, 12/2, 12/3, 10/2
AC Aluminum Interlocked	14/2 (0.433 Dia.), 14/3, 14/4, 12/2, 12/3, 12/4	10/4 (0.594 Dia.), 8/3, 8/4	10/4 (0.594 Dia.), 8/3, 8/4	14/2 (0.433 Dia.), 14/3, 14/4, 12/2, 12/3, 12/4
MC Steel Interlocked	14/2 ① (0.450 Dia.), 14/3 ①, 14/4, 12/2 ①, 12/3 ①, 12/4 ①, 10/2 ① (0.570 Dia.)	10/3 (0.600 Dia.), 10/4 ①, 8/2 ①, 8/3 ①, 6/2 ① (0.790 Dia.)	10/3 (0.600 Dia.), 10/4 ①, 8/2 ①, 8/3 ①, 6/2 ① (0.790 Dia.)	14/2 (0.450 Dia.), 14/3, 14/4, 12/2, 12/3 (0.530 Dia.)
MC Aluminum Interlocked	14/2 (0.470 Dia.), 14/3, 14/4, 12/2, 12/3, 12/4, 10/2 (0.570 Dia.)	10/3 (0.600 Dia.), 10/4, 8/2 (0.705 Dia.)	10/3 (0.600 Dia.), 10/4, 8/2 (0.705 Dia.)	14/2 (0.470 Dia.), 14/3, 14/4, 12/2, 12/3, 12/4, 10/2 (0.570 Dia.)
MC Aluminum Corrugated	14/3 (0.460 Dia.), 14/4, 12/2 ①, 12/3 ①, 12/4 ①, 10/2, 10/3 (0.600 Dia.)	—	—	—
MC Aluminum Flat	12/3 (0.490x0.280)	—	—	—
Flex RW	3/8 Steel & Al.	1/2 Steel	1/2 Steel	—
MCI-A Aluminum	14/2 (0.406 Dia.), 14/3, 12/2, 12/3, 12/4, 10/2, 10/3 (0.512 Dia.)	—	—	—
MCI-A HCF Aluminum	12/2, 12/3, 12/4 10/2 (0.512 Dia.)	—	—	—

① Concretetight when taped and used with PVC jacketed cord.

② Accepts 2 cables of each size listed.

# SPEED-LOCK™ Steel Box Connectors and SPEED-LOCK™ Zinc Snap Connectors

**NEC/CEC:**  
Listed for Ordinary Locations

## Applications

- To ground and secure steel or aluminum AC, MC, MCI, MCI-A, HFC-MCI, FMC and RWFMC flexible metal conduit to boxes and enclosures in dry locations.
- For 1/2" knockout.

## Features

- Patented design installs in seconds without the use of tools or locknut.
- Significantly reduces labor.
- Single, duplex or 90 degree construction.
- Design eliminates loose component parts.
- Superior pullout protection.
- Easily removable for reuse.
- Integral red plastic insulated throat +105 °C (+221 °F) rated provides maximum protection for wire insulation.
- Concrete tight when tapped.



## Standard Material/Finish

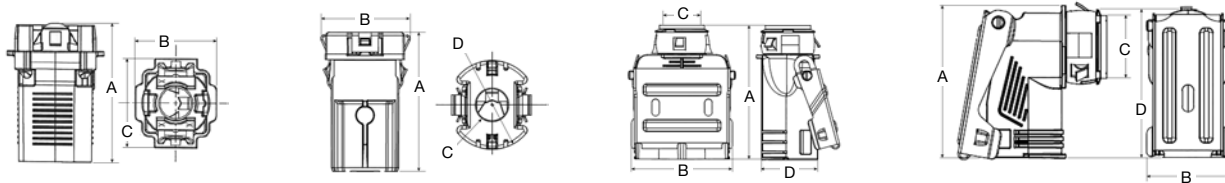
- Body – Zinc diecast
- Cover – Steel/Zinc electroplated
- Insulator – Non-Metallic

## NEC/CEC Certifications and Compliances

- UL Standard: 514B
- CSA Standard: C22.2 No. 18
- cULus Listed: E11853

Trade Size (Inches)	OB/SB KO Size (Inches)	Connector Type	Cable Type			Cable Size	Cable Diameter Millimeters (Inches)	Weight per 100 kg (lb)	Catalog Number
			AC/MC	Aluminium MCI-A	Steel MCI-A				
3/8	1/2	Straight	X	X	X	3/8" 14/2 to 10/3	10.03 - 16.21 (0.395 - 0.638)	2.72 (6)	<b>38SLC</b>
3/8	1/2	Straight	X	X	X	3/8" 14/2 to 10/3	10.03 - 16.21 (0.395 - 0.638)	2.72 (6)	<b>38SLCBULK</b>
3/8	1/2	Cut-In (Old Work)	X	X	X	3/8" 14/2 to 10/3	10.03 - 16.21 (0.395 - 0.638)	2.72 (6)	<b>38SLC0W</b>
3/8	1/2	Duplex	X	X	—	3/8" 14/2 to 10/3	11.68 -15.49 (0.460 - 0.610)	4.99 (11)	<b>3838SLC</b>
3/8	1/2	Duplex	X	X	—	3/8" 14/2 to 10/3	11.68 -15.49 (0.460 - 0.610)	4.99 (11)	<b>3838SLCBULK</b>
3/8	1/2	90°	X	—	—	3/8" 14/2 to 10/3	11.68 -15.49 (0.460 - 0.610)	3.40 (7.5)	<b>3890SLC</b>
1/2	1/2	90°	X	—	—	1/2" 8/2 to 8/3	17.02 -19.94 (0.670 - 0.785)	4.99 (11)	<b>5090SLC</b>

## Dimensions in Millimeters (Inches)



Catalog Number	A	B	C	D
38SLC	23.8 (0.94)	20.8 (0.82)	37.3 (1.47)	—
38SLC0W	39.0 (1.54)	24.9 (0.98)	9.35 (0.37)	28.0 (1.10)
3838SLC	53.3 (2.10)	40.1 (1.58)	15.0 (0.59)	22.3 (0.88)
3890SLC	49.0 (1.93)	31.4 (1.24)	15.0 (0.59)	52.2 (2.06)
5090SLC	39.0 (1.54)	24.9 (0.98)	9.35 (0.37)	28.0 (1.10)